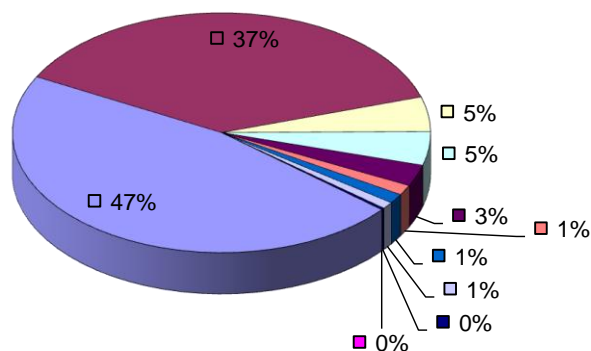


	%	2008 ODA		GNI		ODA/GNI %
		€	\$	€	\$	
Assistance offered to refugees from developing countries - 46.60%	46,60%	12.097.734	17.449.772			
Contribution to the EC Development Budget - 37.48%	37,48%	9.730.000	14.034.552			
Contributions to International Organisations - 4.66%	4,66%	1.209.029	1.743.904			
Implementation of development projects in programme countries - 4.55%,	4,55%	1.181.787	1.704.610			
Technical Assistance - 2.88%	2,88%	748.768	1.080.023			
Humanitarian Aid - 1.36%	1,36%	353.487	509.870			
Administrative Cost of CyprusAid - 1.29%	1,29%	334.093	481.896			
Debt relief - 0.92%	0,92%	240.000	346.176			
Post-conflict peace-building operations (UN) - 0.20%	0,20%	50.700	73.129			
Unallocated - 0.06%	0,06%	14.945	21.556			
	100,00%	25.960.542	37.445.486	15.728.600.000	22.686.932.640	0,1651%

2008 ODA



- Assistance offered to refugees from developing countries - 46.60%
- Contribution to the EC Development Budget - 37.48%
- Contributions to International Organisations - 4.66%
- Implementation of development projects in programme countries - 4.55%,
- Technical Assistance - 2.88%
- Humanitarian Aid - 1.36%
- Administrative Cost of CyprusAid - 1.29%
- Debt relief - 0.92%
- Post-conflict peace-building operations (UN) - 0.20%
- Unallocated - 0.06%

MILLION US DOLLARS RECIPIENT		305 NEW COMMITMENTS (TOTAL FOR GRANTS AND LOANS)	DISBURSEMENTS			
			201 GRANTS	204 LOANS		206 TOTAL NET DISBURSEMENTS
				205 GROSS DISBURSEMENTS	205 REPAYMENTS OF PRINCIPAL (-)	
I. EUROPE, TOTAL		0,142917	0,142917	0,000000	0,000000	0,142917
ALBANIA	071					0,000000
BELARUS	086					0,000000
BOSNIA-HERZEGOVINA	064	0,044347	0,044347			0,044347
CROATIA	062					0,000000
MACEDONIA (FYROM)	066					0,000000
MOLDOVA	093	0,076934	0,076934			0,076934
MONTENEGRO	065					0,000000
SERBIA	063	0,021636	0,021636			0,021636
TURKEY	055					0,000000
UKRAINE	085					0,000000
STATES OF EX-YUGOSLAVIA UNSPEC	088					0,000000
EUROPE, REGIONAL	089					0,000000
II. AFRICA, TOTAL		1,904780	1,264046	0,000000	0,000000	1,264046
II.A. NORTH OF SAHARA, TOTAL		0,000000	0,181434	0,000000	0,000000	0,181434
ALGERIA	130					0,000000
EGYPT	142	0,000000	0,181434			0,181434
LIBYA	133					0,000000
MOROCCO	136					0,000000
TUNISIA	139					0,000000
NORTH OF SAHARA , REGIONAL	189					0,000000
II.B. SOUTH OF SAHARA, TOTAL		1,904780	1,082612	0,000000	0,000000	1,082612
ANGOLA	225					0,000000
BENIN	236					0,000000
BOTSWANA	227					0,000000
BURKINA FASO	287	0,014726	0,014726			0,014726
BURUNDI	228					0,000000
CAMEROON	229					0,000000
CAPE VERDE	230					0,000000
CENTRAL AFRICAN REP.	231					0,000000
CHAD	232					0,000000
COMOROS	233					0,000000
CONGO, DEM. REP.	235					0,000000
CONGO, REP.	234					0,000000
COTE D'IVOIRE	247					0,000000
DJIBOUTI	274					0,000000
EQUATORIAL GUINEA	245					0,000000
ERITREA	271					0,000000
ETHIOPIA	238					0,000000
GABON	239					0,000000
GAMBIA	240	0,036822	0,036822			0,036822
GHANA	241	0,015191	0,015191			0,015191
GUINEA	243					0,000000
GUINEA-BISSAU	244					0,000000
KENYA	248	0,031926	0,031926			0,031926
LESOTHO	249	0,778896	0,245208			0,245208
LIBERIA	251	0,346176	0,346176			0,346176
MADAGASCAR	252	0,005073	0,005073			0,005073
MALAWI	253					0,000000
MALI	255	0,605120	0,316640			0,316640
MAURITANIA	256					0,000000
MAURITIUS	257					0,000000
MAYOTTE	258					0,000000

MILLION US DOLLARS RECIPIENT		305 NEW COMMITMENTS (TOTAL FOR GRANTS AND LOANS)	DISBURSEMENTS			206 TOTAL NET DISBURSEMENTS
			201 GRANTS	204 LOANS		
				205 GROSS DISBURSEMENTS	205 REPAYMENTS OF PRINCIPAL (-)	
MOZAMBIQUE	259				0,000000	
NAMIBIA	275				0,000000	
NIGER	260				0,000000	
NIGERIA	261	0,008538	0,008538		0,008538	
RWANDA	266				0,000000	
ST.HELENA	276				0,000000	
SAO TOME & PRINCIPE	268				0,000000	
SENEGAL	269				0,000000	
SEYCHELLES	270	0,045066	0,045066		0,045066	
SIERRA LEONE	272				0,000000	
SOMALIA	273				0,000000	
SOUTH AFRICA	218	0,013649	0,013649		0,013649	
SUDAN	278				0,000000	
SWAZILAND	280				0,000000	
TANZANIA	282	0,003597	0,003597		0,003597	
TOGO	283				0,000000	
UGANDA	285				0,000000	
ZAMBIA	288				0,000000	
ZIMBABWE	265				0,000000	
SOUTH OF SAHARA, REGIONAL	289				0,000000	
II.C. AFRICA, REGIONAL	298				0,000000	
III. AMERICA, TOTAL		0,142943	0,142943	0,000000	0,142943	
III.A. NORTH & CENTRAL, TOTAL		0,142943	0,142943	0,000000	0,142943	
ANGUILLA	376				0,000000	
ANTIGUA & BARBUDA	377				0,000000	
BARBADOS	329				0,000000	
BELIZE	352				0,000000	
COSTA RICA	336	0,015710	0,015710		0,015710	
CUBA	338	0,098083	0,098083		0,098083	
DOMINICA	378				0,000000	
DOMINICAN REPUBLIC	340				0,000000	
EL SALVADOR	342				0,000000	
GRENADA	381	0,014726	0,014726		0,014726	
GUATEMALA	347				0,000000	
HAITI	349	0,014424	0,014424		0,014424	
HONDURAS	351				0,000000	
JAMAICA	354				0,000000	
MEXICO	358				0,000000	
MONTserrat	385				0,000000	
NICARAGUA	364				0,000000	
PANAMA	366				0,000000	
ST.KITTS-NEVIS	382				0,000000	
ST.LUCIA	383				0,000000	
ST.VINCENT & GRENADINES	384				0,000000	
TRINIDAD & TOBAGO	375				0,000000	
TURKS & CAICOS ISL.	387				0,000000	
WEST INDIES, REGIONAL	380				0,000000	
N. & C. AMERICA, REGIONAL	389				0,000000	
III.B. SOUTH, TOTAL		0,000000	0,000000	0,000000	0,000000	
ARGENTINA	425				0,000000	
BOLIVIA	428				0,000000	
BRAZIL	431				0,000000	
CHILE	434				0,000000	
COLOMBIA	437				0,000000	
ECUADOR	440				0,000000	
GUYANA	446				0,000000	
PARAGUAY	451				0,000000	
PERU	454				0,000000	
SURINAME	457				0,000000	
URUGUAY	460				0,000000	
VENEZUELA	463				0,000000	
SOUTH AMERICA, REGIONAL	489				0,000000	

MILLION US DOLLARS RECIPIENT		305 NEW COMMITMENTS (TOTAL FOR GRANTS AND LOANS)	DISBURSEMENTS			
			201 GRANTS	204 LOANS		206 TOTAL NET DISBURSEMENTS
				205 GROSS DISBURSEMENTS	205 REPAYMENTS OF PRINCIPAL	
				(-)		
III.C. AMERICA, REGIONAL	498					0,000000
IV. ASIA, TOTAL		4,123690	2,207228	0,000000	0,000000	2,207228
IV.A. MIDDLE EAST, TOTAL		3,224228	1,307766	0,000000	0,000000	1,307766
IRAN	540	0,137820	0,137820			0,137820
IRAQ	543					0,000000
JORDAN	549					0,000000
LEBANON	555	0,073129	0,464637			0,464637
OMAN	558					0,000000
PALESTINIAN ADMIN. AREAS	550	0,054687	0,315909			0,315909
SAUDI ARABIA	566	0,000000	0,000000			0,000000
SYRIA	573					0,000000
YEMEN	580	2,937442	0,369970			0,369970
MIDDLE EAST, REGIONAL	589	0,021150	0,019431			0,019431
IV.B. SOUTH & CENTR. ASIA, TOTAL		0,661151	0,661151	0,000000	0,000000	0,661151
AFGHANISTAN	625					0,000000
ARMENIA	610	0,102486	0,102486			0,102486
AZERBAIJAN	611	0,042078	0,042078			0,042078
BANGLADESH	666	0,025395	0,025395			0,025395
BHUTAN	630					0,000000
GEORGIA	612	0,118343	0,118343			0,118343
INDIA	645					0,000000
KAZAKHSTAN	613	0,022226	0,022226			0,022226
KYRGYZ REP.	614	0,094532	0,094532			0,094532
MALDIVES	655	0,019592	0,019592			0,019592
MYANMAR (BURMA)	635	0,073069	0,073069			0,073069
NEPAL	660					0,000000
PAKISTAN	665	0,059883	0,059883			0,059883
SRI LANKA	640					0,000000
TAJIKISTAN	615	0,011213	0,011213			0,011213
TURKMENISTAN	616					0,000000
UZBEKISTAN	617	0,092334	0,092334			0,092334
CENTRAL ASIA, REGIONAL	619					0,000000
SOUTH ASIA, REGIONAL	679					0,000000
SOUTH & CENTR. ASIA, REGIONAL	689					0,000000
IV.C. FAR EAST, TOTAL		0,238311	0,238311	0,000000	0,000000	0,238311
CAMBODIA	728					0,000000
CHINA	730	0,176201	0,176201			0,176201
INDONESIA	738	0,062110	0,062110			0,062110
KOREA, DEM.	740					0,000000
LAOS	745					0,000000
MALAYSIA	751					0,000000
MONGOLIA	753					0,000000
PHILIPPINES	755					0,000000
THAILAND	764					0,000000
TIMOR-LESTE	765					0,000000
VIET NAM	769					0,000000
FAR EAST ASIA, REGIONAL	789					0,000000
IV.D. ASIA, REGIONAL	798					0,000000
V. OCEANIA, TOTAL		0,000000	0,000000	0,000000	0,000000	0,000000
COOK ISLANDS	831					0,000000
FIJI	832					0,000000
KIRIBATI	836					0,000000
MARSHALL ISLANDS	859					0,000000
MICRONESIA, FED. STS.	860					0,000000
NAURU	845					0,000000
NIUE	856					0,000000
PALAU	861					0,000000
PAPUA NEW GUINEA	862					0,000000
SAMOA	880					0,000000
SOLOMON ISLANDS	866					0,000000

MILLION US DOLLARS RECIPIENT		305 NEW COMMITMENTS (TOTAL FOR GRANTS AND LOANS)	201	204	205	206
			DISBURSEMENTS			
			GRANTS	LOANS		TOTAL NET DISBURSEMENTS
			GROSS DISBURSEMENTS	REPAYMENTS OF PRINCIPAL (-)		
TOKELAU	868					0,000000
TONGA	870					0,000000
TUVALU	872					0,000000
VANUATU	854					0,000000
WALLIS & FUTUNA	876					0,000000
OCEANIA, REGIONAL	889					0,000000
VI. BILAT. UNALLOCATED	998	17,991253	17,991253			17,991253
VII. RECOVERIES ON GRANTS (negative amounts)	110	//////////	0,000000,000000	//////////	//////////	0,000000
VIII. BILATERAL, TOTAL	1000	24,305583	21,748387	0,000000	0,000000	21,748387
<i>of which:</i>						
ADMINISTRATIVE COSTS	118	0,903534	0,903534			0,903534
-Core support to INGOs, Total	1200	0,000000	0,000000			0,000000
<i>of which:</i>						
-ICRC	1211	0,063646	0,063646			0,063646
-IPPF	1212					0,000000
(specify other INGOs)						0,000000
ISC		0,003173	0,003173			0,003173
						0,000000
PARTNERSHIPS, Total	1300	0,014537	0,014537			0,014537
<i>of which:</i>						
-GAVI	1311					0,000000
(specify other PPPs)						0,000000
IUCN		0,014537	0,014537			0,014537
A. CORE CONTRIBUTIONS TO U.N., TOTAL	992	0,830715	0,830715	0,000000	0,000000	0,830715
1. U.N.D.P.	959	0,004937	0,004937			0,004937
2. UNICEF	963	0,027688	0,027688			0,027688
3. UNRWA	964					0,000000
4. W.F.P.	966					0,000000
5. UNHCR	967	0,076880	0,076880			0,076880
6. UNFPA	974					0,000000
7. IFAD	988	0,030000	0,030000			0,030000
8 OTHER UN	975	0,691209	0,691209	0,000000	0,000000	0,691209
<i>of which:</i>						
Contributions reportable in part as ODA:						
WHO (70%)	931	0,000000	0,000000			0,000000
WIPO (3%)	814	0,000000	0,000000			0,000000
FAO (51%)	932	0,108783	0,108783			0,108783
WMO (4%)	933	0,000873	0,000873			0,000873
ILO (15%)	940	0,023275	0,023275			0,023275
UPU (16%)	936	0,006020	0,006020			0,006020
ITU (18%)	937	0,012741	0,012741			0,012741
UNESCO (25%)	942	0,069601	0,069601			0,069601
UNO (12%)	938	0,113174	0,113174			0,113174
UNPKO (7%)	943	0,114062	0,114062			0,114062
Other UN agencies and funds	939	0,242680	0,242680			0,242680
UNIFEM		0,003002	0,003002			0,003002
UNCCD		0,010982	0,010982			0,010982
UNEP		0,033501	0,033501			0,033501
UNFCCC		0,012007	0,012007			0,012007
UN Habitat		0,003485	0,003485			0,003485
UNIDO		0,068452	0,068452			0,068452
OHCHR		0,020505	0,020505			0,020505
United Nations Peacebuilding Fund		0,014794	0,014794			0,014794
UNV		0,001936	0,001936			0,001936
IAEA -Assessed		0,040417	0,040417			0,040417
IAEA - Technical Cooperation Fund		0,033600	0,033600			0,033600
B. TOTAL EC		17,914608	14,467272	0,000000	0,000000	14,467272
8. EDF	918	0,000000	0,000000	0,000000	0,000000	0,000000
9. EC	917	17,481888	14,034552			14,034552

MILLION US DOLLARS RECIPIENT		305 NEW COMMITMENTS (TOTAL FOR GRANTS AND LOANS)	DISBURSEMENTS			
			201 GRANTS	204 LOANS		206 TOTAL NET DISBURSEMENTS
				205 GROSS DISBURSEMENTS	205 REPAYMENTS OF PRINCIPAL (-)	
10.EIB	919	0,000000	0,000000			0,000000
FEMIP		0,432720	0,432720			0,432720
C. TOTAL WORLD BANK GROUP		0,000000	0,000000	0,000000	0,000000	0,000000
11.IBRD	901					0,000000
12.IDA	905					0,000000
13.IFC	903					0,000000
14.MIGA	902					0,000000
D. TOTAL REGIONAL BANKS		0,000000	0,000000	0,000000	0,000000	0,000000
15.As.D.B.	915					0,000000
16.As.D.B.SPECIAL FUND	916					0,000000
17.IDB	909					0,000000
18.IDB SPECIAL FUND	912					0,000000
19.Afr.D.B.	913					0,000000
20.Afr.DEV.FUND	914					0,000000
21.CARIBBEAN D.B.	906					0,000000
22.CABEI	910					0,000000
23.Afr.SOLIDARITY FUND	972					0,000000
24.TOTAL OTHER REGIONAL BANKS & SPECIAL FUNDS (specify)	816	0,000000	0,000000			0,000000
						0,000000
						0,000000
E. OTHER AGENCIES		0,399113	0,399113	0,000000	0,000000	0,399113
26.IMF,TOTAL	907					0,000000
of which:						
-PRGF	958					0,000000
-PRGF-HIPC	949					0,000000
27.TOTAL OTHER MULTILATERAL	989					0,000000
of which:						
-GEF (77%)	811					0,000000
-Montreal Protocol (100%)	812	0,065168	0,065168			0,065168
-GFATM	1312					
-Global Fund		0,003456	0,003456			0,003456
(specify other agencies)		0,330489	0,330489			0,330489
CFTC		0,234395	0,234395			0,234395
CAPAM		0,000130	0,000130			0,000130
CF		0,026714	0,026714			0,026714
COL		0,017251	0,017251			0,017251
CPTM		0,007303	0,007303			0,007303
CITES		0,001903	0,001903			0,001903
EPPO		0,028704	0,028704			0,028704
GICHD		0,002404	0,002404			0,002404
ISTA		0,004291	0,004291			0,004291
WMU		0,007394	0,007394			0,007394
F. RECOVERIES ON GRANTS &	111	////////////////////////////////////		////////////////////////////////////	////////////////////////////////////	0,000000
G. MULTILATERAL, TOTAL	3000	19,144436	15,697100	0,000000	0,000000	15,697100
TOTAL BILAT. + MULTILAT.		43,450019	37,445487	0,000000	0,000000	37,445487